

SONG FOR MY FATHER

HORACE SILVER

♩=109

BARITONE SAX.



8. SX.



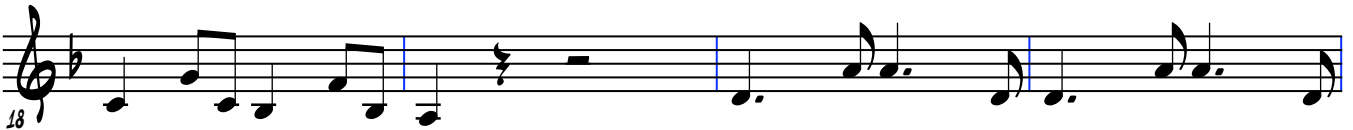
8. SX.



8. SX.



8. SX.



8. SX.

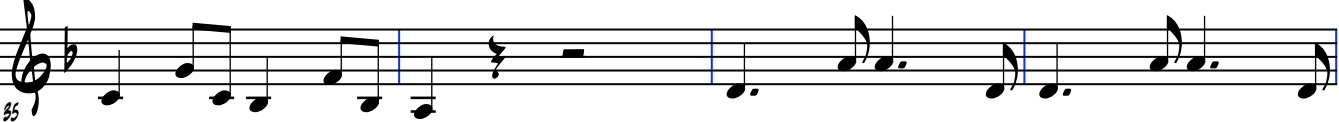


8. SX.



8. SX.



8. Sax.  Musical notation for Saxophone 8, measures 35-42. The staff shows a melodic line starting with a quarter note, followed by eighth notes, and ending with a quarter note. Measure 42 ends with a double bar line.

8. Sax.  Musical notation for Saxophone 8, measures 43-50. The staff shows a melodic line starting with a quarter note, followed by eighth notes, and ending with a quarter note. Measure 50 ends with a double bar line.

8. Sax.  Musical notation for Saxophone 8, measures 51-58. The staff shows a melodic line starting with a quarter note, followed by eighth notes, and ending with a quarter note. Measure 58 ends with a double bar line.

8. Sax.  Musical notation for Saxophone 8, measures 59-66. The staff shows a melodic line starting with a quarter note, followed by eighth notes, and ending with a quarter note. Measure 66 ends with a double bar line.

8. Sax.  Musical notation for Saxophone 8, measures 67-74. The staff shows a melodic line starting with a quarter note, followed by eighth notes, and ending with a quarter note. Measure 74 ends with a double bar line.